

Tricho-mite®

Target pests

- Indian meal moth (*Plodia interpunctella*)
- Mediterranean flour moth (*Ephestia kuehniella*)
- Flour moth (*Pyralis farinalis*)
- Grain moth (*Nemapogon granella*)
- Clothes moth (*Tinea pellionella*)
- Other moth or clothes moth species

Target crops

Residential

- Houses
- Cabins
- Kitchens
- Storage cabinets
- Attics
- Closets
- Pantry cupboards
- Warehouses

Commercial

- Bulk food stores
- Pet shops
- Bakeries
- Grocery stores
- Restaurants

Industrial

- Grain warehouses
- Flour mills

Public

- Museums
- Libraries

Trichogramma, tiny 1 mm parasitoid wasps, effectively eliminate moth infestations (clothes and pantry moths) in various environments such as food stores, museums, grain warehouses, and mills.

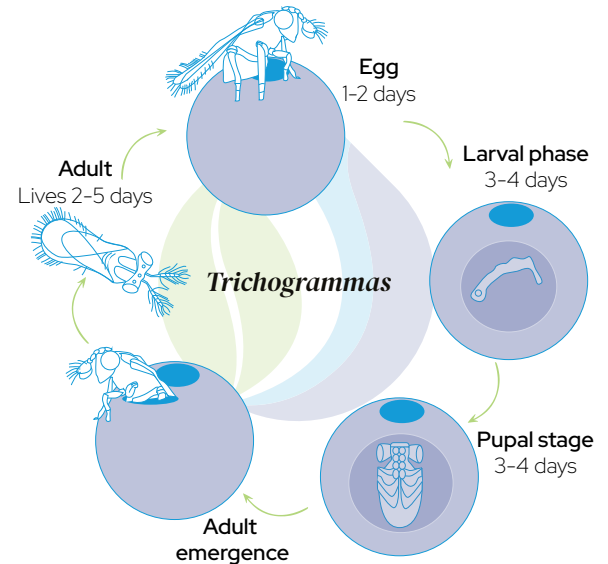
Safe for human and animal health, they parasitize the eggs of harmful moths, preventing their development. Ideal for hard-to-reach areas (attics, closets), they target species like the Indian and Mediterranean flour moths. Trichogramma can be used in combination with pheromone traps but not with pesticides.

Life cycle

- **Life Cycle:** Lasts 7 to 10 days (variable depending on temperature).
- **Optimal Conditions:** Temperature: 77-86°F (25-30°C) and Relative Humidity: 60-80%.
- **Reproduction:** Once mated, the female searches for freshly laid host eggs to deposit her eggs inside and can lay 50 to 80 eggs.

Introduction rate

Introduction	Quantity	Frequency	Duration
Preventive	1-2 card per 250 ft ² (25 m ²). For a 5½ (approximately 350 ft ² (32 m ²)), 32 cards are needed for an 8-week period.	4 cards every week	8 weeks Ensure each card remains in place for at least 2-3 weeks.



Application

Clean infested areas before placing the cards.

Wash clothes and store them in airtight bags until the treatment is complete.

Vacuum thoroughly. Clean closets with a mixture of water and bleach.

In the case of pantry moths, inspect dry foods (flour, cereals, nuts, pet food, seeds, etc.). If possible, place them in the freezer for 48 hours. Then, store them in a large plastic bag to protect them during the treatment.

Place the cards in infested areas. To ensure the treatment's success, handle the cards carefully during installation by holding them gently by the edges or the hook.

Storage



Never freeze the cards. They can be refrigerated for a maximum of four weeks at 39.2-50°F (4-10°C).



Keep in a low-humidity environment to prevent mold.