



# *Stratiolaelaps scimitus*

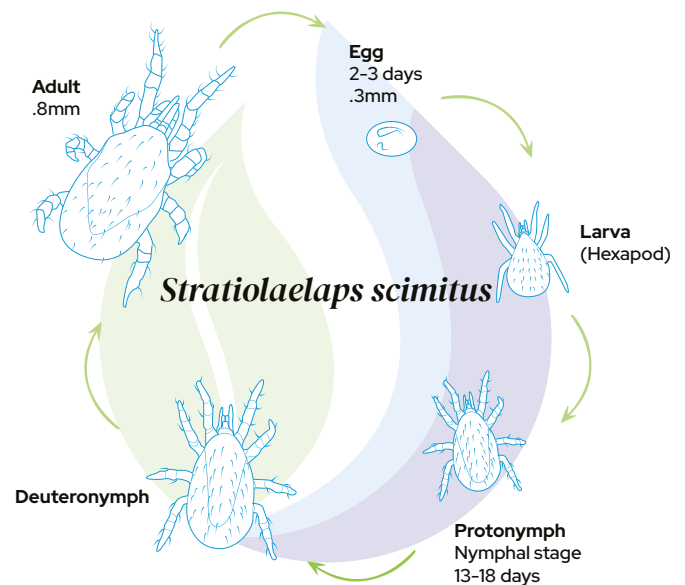
***Stratiolaelaps scimitus*** is pear-shaped with long legs and is 1.0 mm long. Its color can vary from cream to brown. The immature stages are usually semi-transparent to cream in color. The eggs are oval and measure .5 mm.

This product is perfect for an in-depth “cleaning” of the soil before starting the season.

This predator is a native species, which feeds on thrips (prepupa and pupa), fungus gnats, root scales, root aphids, spider mites off the plant and mealybug crawlers in crops.

## Life cycle

- The optimum conditions are between 15 and 25°C.
- The life cycle completes approximately at 18 days at 20°C.
- Sex ratio is equivalent, 1 female for 1 male.
- The eggs hatch after 2 to 3 days.
- Each *Stratio* eats 1 to 5 preys per day
- For lack of food, it becomes a detritus feeder and feeds on algae and plant debris. Predatory mite for fungus gnats and other soil pests.



## Introduction rates

Introduction	Quantity	Surface	Frequency	Duration
Prevention	100	Per m <sup>2</sup>	14-28 days	2 intros in total
Curative light	250	Per m <sup>2</sup>	As needed	As needed
Curative strong	500	Per m <sup>2</sup>	As needed	As needed









## Application

*Stratiolaelaps* has been used for bedding, potted plants, seedlings, and cuttings. It adapts to a variety of growing medium and capillary mats used in plant production. It will not survive on flood floors.

*Stratio* is applied loose in bulk. For loose application, be sure to rotate the bottle gently to mix the mites and substrate carrier prior to opening the bottle, then sprinkle the equivalent of 1 tsp onto base of plants. Distribute all mites as evenly as possible.

## Instructions

-  Use insects upon receipt. Do not freeze or refrigerate.
-  Moisten the soil well before introducing the mites. Do not flood.
-  Open bottle and remove sealant paper or fabric
-  Sprinkle the contents on the soil or substrate.
-  Disperse equitably in the treated area or areas suitable for potting flies.
-  Make 1 or 2 introductions at the beginning of the season. The second application must be done 2 to 3 weeks after the first.



David R. Gillespie

