



Anystis baccharum

Anystis baccharum also known as the Crazee Mite or Whirligig mite, is a cosmopolitan predatory mite.

It is a large and very fast mite. It primarily feeds on foliar pests such as thrips, aphids, and spider mites, but it also feeds on echinotrips, psyllids, whitefly, and European red mite.

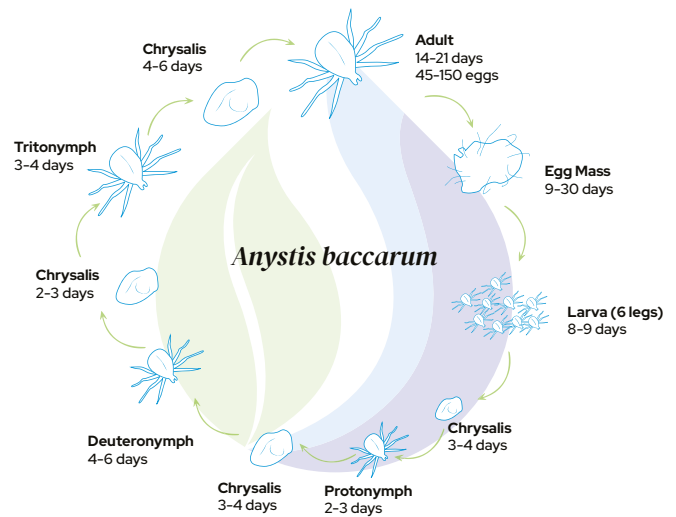
They are approximately twice the size of adult *Phytoseiulus persimilis* and highly mobile.

They can self-distribute between plants and cross over non-organic surfaces, and they are strong enough to walk through webbing and sticky surfaces, like trichomes.

Therefore, they are a well-suited predator for both indoor and outdoor crop applications.

Life Cycle

- Optimum conditions: temperature of 25°C and a relative humidity of 60%.
- Development time: 3 - 4 weeks from egg to adult. Adult life is 3 weeks.
- All stages are predatory, and all mites are female.
- Egg laying: 45 - 150 over 3 weeks. Eggs are laid in clusters of 15 - 30 in loose growing media.



Introduction Rate

Introduction	Rate	Area	Frequency	Duration
Preventive	2.5	per m ²	1 - 2 introductions or as needed	per season or as needed
Hot spot	10	per m ²	1 - 2 introductions or as needed	per season or as needed



Application

Anystis baccharum is packaged and shipped at various life stages.





A package of adults is shipped as their last pupal stage, so they can emerge as hungry adults upon receipt.

The mites are fragile, so allow them some time to emerge and move around. Because of this, central release in a desired location is appropriate, to allow voluntary release.

Sprinkling and pouring out the contents in several locations is also an option.

The fastest way to determine the quality of the mites is to watch the emergence over 1 - 3 days after receiving them.

Instructions

-  Use as soon as you receive.
Do not refrigerate. Do not freeze.
-  The mites are fragile, so allow them some time to emerge and move around.
-  Opt. 1.
Open the container in the center of the production.
-  Opt. 2.
Sprinkle and pour out the contents in several locations.

