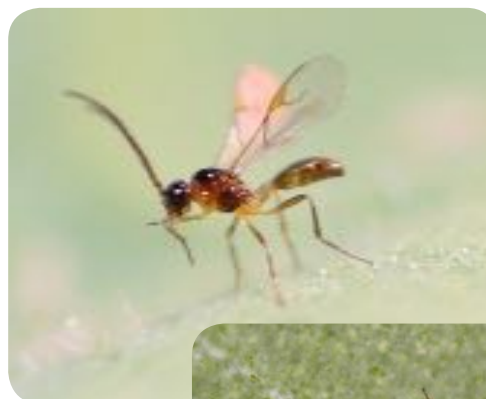


### Description

*Aphidius matricariae* is a parasitoid wasp specializing in the control of the Green Peach Aphid (*Myzus persicae*) and is also used to control the Cannabis Aphid (*Phorodon cannabis*). The adult is black with brown legs. This parasitoid wasp has long antennae and is about 2 mm long.

The adult is black with brown legs. This parasitoid wasp has long antennae and is approximately 2-3 mm long. After mating, the female lays her eggs inside juvenil or adult aphids. *Aphidius matricariae* larvae develops and feeds on the internal organs of the aphid. After 7 days, the aphid becomes immobile, swells and turn beige. We call this stage «mummy». A new adult emerges from the parasitized aphid after a few days.



### Life cycle

- The optimum conditions are a temperature between 18 and 25 °C and a relative humidity between 60 and 80%.
- The development time of *Aphidius colemani* is 14 days at 21 °C.
- The female lays more than one hundred eggs in her lifetime.
- The mummy stage occurs about 7 days after laying.
- The adult lives 2 to 3 weeks depending on the temperature.
- Does not enter diapause.

### Introduction rate

Introduction	Quantity	Surface	Frequency	Duration
Preventive	0,25	m <sup>2</sup>	as needed	as needed
Curative light	1	m <sup>2</sup>	7 days	2 to 3 introductions
Curative strong	2	m <sup>2</sup>	7 days	3 to 6 introductions

### Application

*Aphidius matricariae* is used in a greenhouse, inside production and outside production.

It is advisable to use this biocontrol agent as a precaution with the introduction of reservoir plants or to introduce small amounts (0.25 / m<sup>2</sup>) before the discovery of the first colonies of aphids.

In summer, *Aphidius matricariae* should be used with *Aphidoletes aphidimyza* or with convergent ladybugs. Control is achieved when 80% of the aphids are parasitized.

Yellow sticky traps can affect *Aphidius matricariae*. Use 1 yellow sticky trap per 100 plants and release the agents away from them.




### Formats

- 100-0503 - *Aphidius matricariae*- 250 mummies/adults
- 100-0506 - *Aphidius matricariae* - 500 mummies/adults
- 100-0504 - *Aphidius matricariae*- 1k mummies/adults
- 100-0520 - *Aphidius matricariae* - 5k mummies/adults

### Instructions


**1**



*Aphidius matricariae* arrives at the stage of nymph inside a parasitized and dead aphid.


The adults will emerge after a few days. Keep container at 22-25 °C and in the shade.

**2**



Upon emergence, release the adults. Open the container in the center of the production.

**3**



Repeat the introduction every week for 3 weeks or until you find 80% of parasitized aphids.

DO NOT FREEZE - DO NOT REFRIGERATE - For more information, visit [www.anatisbioprotection.com](http://www.anatisbioprotection.com)